



# Summer 2020 technical update

## **Technical Support - New!**

Our technical support for application and transcript services have been consolidated in order to provide a more efficient and effective service. For technical support, please email:

[techsupport@educationplannerbc.ca](mailto:techsupport@educationplannerbc.ca)

## **REST Server**

The REST Server supports connections between BC post-secondary institutions (PSIs) and the document exchange hub. Version 3.8.3 includes updates that support a more efficient method for exchanging a large number of documents at a time as well as several bug fixes related to performance and error handling.

## **EPBC XML Document Exchange Module**

The EPBC Module for Banner has recently been updated to version 9.3 to support enhanced features for both high school and post-secondary transcripts. The next version will include processes that support the integration of the Master Institution List (MIL) with Banner; it is set to be released in the fall.

EPBC is working with Colleague PSIs to develop additional functionality for XML high school transcripts in the EPBC Transcript Exchange Package for Colleague, which will be available this summer.

# Transcripts Update

## **XML High School Transcripts**

Collaborative work continues with both the Ministry of Advanced Education, Skills and Training and the Ministry of Education to complete the onboarding of BC PSIs to XML High School transcripts by spring 2021. Regular check-in meetings will be provided for PSIs to ensure a supported and collaborative process.

## **PESC College Transcript Version 1.8**

The first phase of moving to the latest version of PESC College Transcript standard version 1.8 was completed in June.

The next phase will begin late summer with a focus on additional data elements for post-secondary transcript exchange. Some PSIs will be sending the new elements; however, all PSIs will need to receive them. EPBC is working with PSIs to identify how to include these elements in their receiving capability to meet the anticipated production date of late fall.

See [pesc.org](http://pesc.org) for more information about the XML standard used by EPBC.

## Implementation Timeline

SIS	Component	Version	Required Release	Ready for Testing	Target Release Date	Major Functionality
Banner	EPBC Module for Banner	9.5	No	Fall 2020	Late Fall 2020 (TBD)	Support for phase 2 of the College Transcript 1.8 implementation
Colleague	EPBC Transcript Exchange (TE) Package	2	Yes	Fall 2020	Late Fall 2020	Support for phase 2 of the College Transcript 1.8 implementation
Other SISs (Selkirk, SFU, VIU & UBC)	PSI-own	PSI-own	Depends on SIS	Fall 2020 (TBD)	Late Fall 2020 (TBD)	Support for phase 2 of the College Transcript 1.8 implementation

## Applications Update

### EPBC Platform 3.0 Release

In preparation for the next major release of the EPBC platform (EPBC 3.0), BC PSIs will have the opportunity to preview and assess the following new features in the EPBC STAGING environment this fall.

#### Profile

- All addresses will include a 3rd address line

#### Academic History

- Entry limits on high school and post-secondary institutions will be removed
- Graduation date and graduating high school can be indicated by applicant
- Credentials achieved at post-secondary can be specified by applicant
- Field of study for post-secondary entries can be indicated by applicant

#### Program Selection

- Business rules can be set up by PSIs to govern which programs are displayed

#### Broad-Based Questionnaire

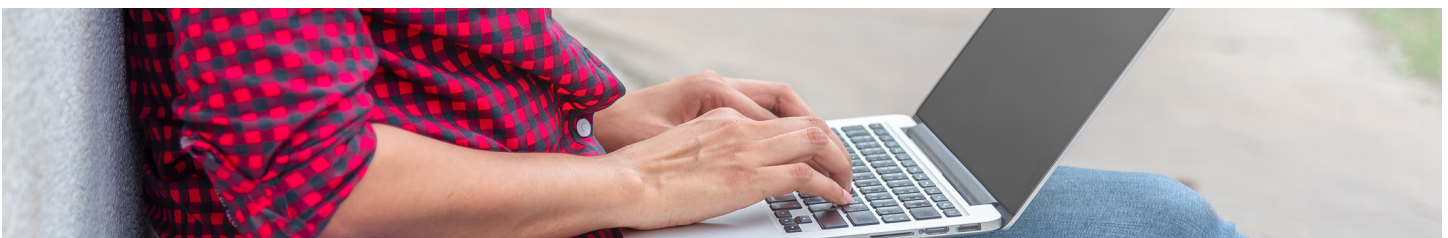
- PSIs can create and revise their own application questions
- Rules-based application questions can be set up by PSIs (e.g. program-specific questions; questions based on an applicant's answers to another question)

#### Fees

- Multiple fees can be assigned to the same application
- Rules-based, itemized application fees can be set up by PSIs (e.g. additional fees to specific programs; late application fees)

#### Management Console

- A new admin management tool that allows PSIs to configure and manage the new Program Selection, Broad-Based Questionnaire and Fees functionalities



## Master Institution List (MIL)

The MIL project is supporting the transition from an SFU-managed list of external education institutions to an EPBC-managed list. An expanded list is being developed to include other data sources that will support current and future data transfer and exchange initiatives. As part of this development, a new institution identifier will be established by EPBC to replace the previous SFU identifier.

Additional changes to the application process that support the MIL will be implemented in the fall:

- Applicants will be able to enter an institution name when “Other” institution is selected; this name will be included in the application XML sent to PSIs
- City, country and region will be displayed when an applicant selects an institution to help reduce errors in identifying schools with similar names

## Implementation Timeline

SIS	Component	Version	Required Release	Ready for Testing	Target Release Date	Major Functionality
Banner	EPBC Module for Banner	9.4	No	October 2020	TBD	Support for using the EPBCExternalInstID for institutions identified within an applicant’s academic history
Banner	Migration Script	1	Yes	Mid to Late August 2020	End of September 2020	Migrate existing institutions with SFUInstID to using EPBCExternalInstID
Non-Banner Institutions		1	Yes	Mid to Late August 2020	End of September 2020	Non-Banner institutions responsible for own migration to EPBCExternalInstID, if required

